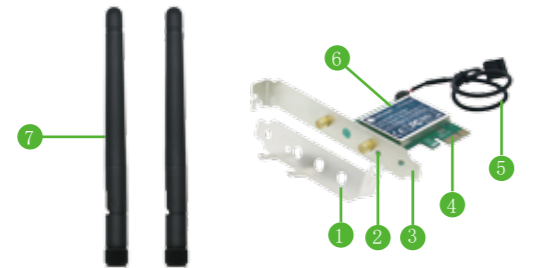




1200Mbps PCI Express Wireless Card Build in Bluetooth 4.0 Adapter

Model :FS-AC1200

Basic Edition: FS-AC1200 Wireless AC 1200Mbps Dual Band Wi-Fi Adapter Build in Bluetooth 4.0 with Antenna



Pro Edition: FS-AC1200 Wireless AC 1200Mbps Dual Band Wi-Fi Adapter Build in Bluetooth 4.0 with High Power Antenna



1

- 1 Low profile bracket
- 2 Activity Indicator
- 3 Standard profile bracket
- 4 PCI express slot
- 5 Bluetooth data cable
- 6 Heat sink
- 7 2X3 dBi Wi-Fi Antenna
- 8 Extension cable(2meters)
- 9 Magnetic mounting base
- 10 2X6dBi high gain antenna

Product Description:

Feb Smart Wireless Dual Band AC1200(2.4GHz 300Mbps or 5GHz 867Mbps) PCI Express (PCIe 1X) Wi-Fi Adapter Network Card Special Designed for Online Gaming and Pro HD Video Streaming.

Product Features:

1. Intel® Dual Band Wireless-AC 7265 inside for stable Wi-Fi and Bluetooth Connection.
2. Seamlessly compatible with 802.11ac/a/b/g/n products
3. Ultra fast wireless AC network at 5G 867 Mbps or 2.4G 300 Mbps.
4. Supports 64/128 WEP, WPA/WPA2, WPA-PSK/WPA2-PSK (TKIP/AES)
5. Intel® Bluetooth 4.0 technology gives best wireless Audio transmission.

2

6. Upgrades a standard or low profile bracket for all desktop PC.
7. External Wi-Fi antenna for better wireless connection.
8. Detachable antenna design for more powerful antenna replacement.
9. Compatible with IEEE 802.1X, 4X, 8X, 16X PCI express slot

Basic Edition Package:

- 1X FS-AC1200
- 2X Wi-Fi Antenna
- 1XUser Manual
- 1XMini CD
- 1XLow Profile Bracket

Pro Edition Package:

- 1X FS-AC1200
- 1XHigh Power Antenna Kit
- 1XUser Manual
- 1XMini CD
- 1XLow Profile Bracket

Warning: FS-AC1200 Works with Intel Inside CPU Computer, Can't Works with AMD CPU Computers.

System & Hardware Requirements:

Windows 10(32/64bits), Windows 8.1(32/64bits), Windows8 (32/64bits), No driver needed.

Windows7 (32/64bits), Driver needed, can be installed by mini CD in package.

Get the newest driver and more software please visit <https://downloadcenter.intel.com> and search" Intel®

3

Analytical Note:

- 1.Can find "Intel® Dual Band Wireless-AC 7265"and "Intel® Wireless Bluetooth®"means Works Correctly no need to install driver anymore. Can connect to internet or Bluetooth directly as you wish.
2. Can't find "Intel® Dual Band Wireless-AC 7265"and "Intel® Wireless Bluetooth®" but can find "Intel® Dual Band Wireless-AC 7265" and "Intel® Wireless Bluetooth®" under "Other Device" in "Device Manager." Means your system maybe have been deleted few file from Windows original system .But both Wi-Fi Adapter and Bluetooth data cable was placed correctly .Do not worry follow steps install the software. Device will work(Most Windows 7 like this).
3. Can't find "Intel® Dual Band Wireless-AC 7265" and "Intel® Wireless Bluetooth®", can't find under "Other Device" in "Device Manager" means you were not put the Wi-Fi card to PCI Express Slot correctly.Need to re-plug Wi-Fi adapter or change it to another PCI Express slot check again.
4. Can find "Intel® Dual Band Wireless-AC 7265",but can't find "Intel® Wireless Bluetooth®" means the Bluetooth data cable not placed in the right slot. If do not want to use Bluetooth function can ignore this. If need it

8

can back to plug the Bluetooth data cable again. If computer do not have slot to plug Bluetooth data cable after carefully checking means can't use the Bluetooth on this computer.

FS-AC1200 Software Installation:

Note: FS-AC1200 compatible with Windows10, 8.1, 8, 7 (32/64bit) Intel CPU computer. Most of Windows 10, 8.1,8 systems do not need any driver if equipped with Windows original system. If system is unable to read Wi-Fi adapter, please refer to the driver installation steps as below. The software for each system are using same operating panel, but build on different driver files.(Most of Windows7 and few Windows10.8.1,8 32/64bit like this)

Preparation:

1. If computer have CD RAM, please check computer system version. For example, Windows 7 32 or 64 bit.
2. If computer can't read CD please visit www.febsmart.com and download software pack. Or go to downloadcenter.intel.com search Intel® Dual Band Wireless-AC 7265 make sure the corrected software is selected. Afterwards, check the system version such as Windows 7 64 bit.

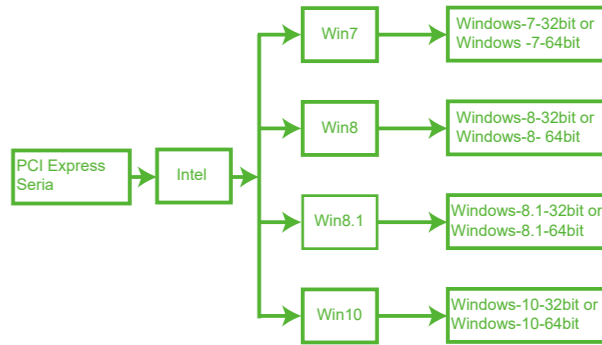
Install the Software on Windows10, 8.1, 8, 7 (32/64bit):

Note: This driver installation steps works for

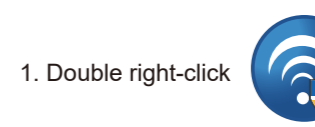
9

Windows10, 8.1, 8, 7 (32/64bit) systems.

Step1. Follow steps and find correct software version on mini CD or Downloaded software pack:



Steps2. Double right-click the software and running the software.



1. Double right-click

10

2. Accept license. Click Install.



3. Waiting the installation.



4. Installation done. Restart computer.

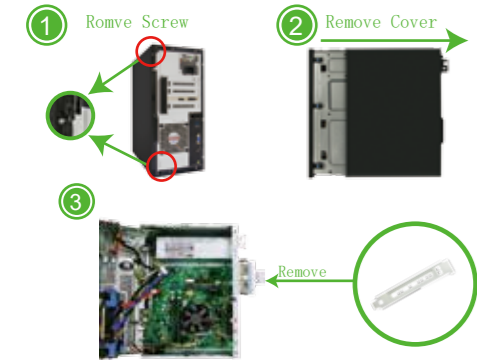


11

Dual Band Wireless-AC 7265" Or send email to us at support@febsmart.com

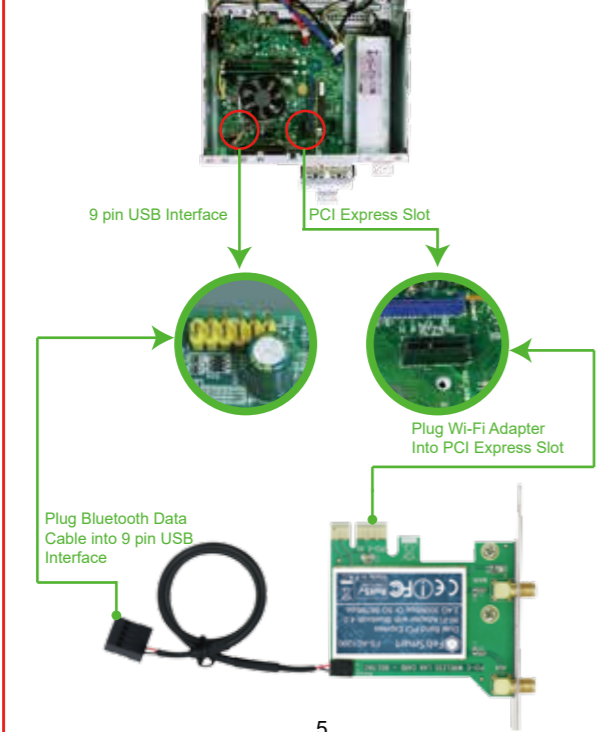
Assemble Wi-Fi Adapter and Bluetooth to Desktop Computers:

Step1. Switch OFF, unplug your computer from the main socket, unplug the power cord and other connected peripheral devices. Remove the cover from computer's case.



4

Step2. Find the correct PCI Express Slot ,insert the wireless network card into an empty PCI-E slot of the motherboard. Find 9 pin USB ports and plug the Bluetooth cable into it.



5

3. Screw in the antennas included directly to wireless network card. Note: If needed Position of the antennas can be adjusted to improve wireless reception. Reattach the cover of computer case, turn on computer.

Basic Edition:



Screw Antenna

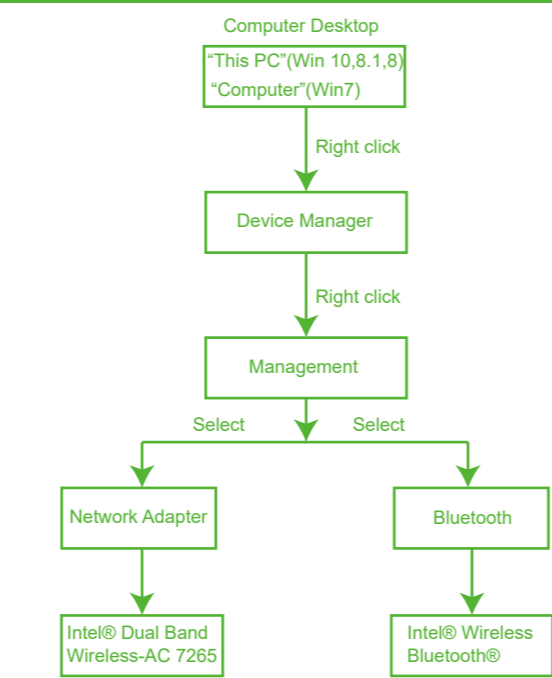
Pro Edition:



Screw Antenna

6

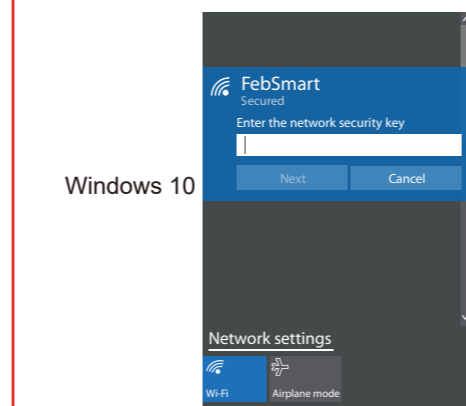
Find the Wi-Fi adapter on computers, check if the Wi-Fi adapter assembled properly:



7

Step3. Connect to internet:

1. Locate the task bar in the bottom right corner of your desktop.
 2. Select the Wireless icon as below on each system.
-
3. Select the Wi-Fi signal, fill correct password and connect to it. Afterwards enjoy fast internet.



12

Windows 8,8.1



Windows 7



Connect to Bluetooth device:

1. Locate the task bar in the bottom right corner of your desktop.
2. Click Bluetooth. icon. And follow windows reminder connect it to the Bluetooth device.

13

Trouble Shooting Analyze:

1. Assembled the adapter and completed software installation my computer can't find the any Wi-Fi signal, how can I fix it?
Step1. FS-AC1200 compatible with Windows10,8.1,8,7 system, check if your system on the list.
Step2. System on the list, but computer can't read any signal, please close the computer open the cover change the PCI Express slot to another or re-plug it .Ensure it is plugged correctly. Computer will find it soon.

2. Where I can get the latest software for my computer?
FS1200 designed by Intel chipset so it means you can download the latest software on Intel's site. Get the newest software please visit <https://downloadcenter.intel.com> and search" Intel® Dual Band Wireless-AC 7265" Or send email to us at support@febsmart.com

3. Why my computer can find poorly signal only? How get better signal ?
FS-AC1200 Basic Edition packed with normal antenna it can receive signal around 10~20meters in house, the signal strength depends on your router. At the same time you can change the direction of the antenna to get more better signal. Or you can purchase Feb Smart

14

FS-A2 change a high power antenna.

The other possibility is the antenna was not correctly put on the interface.
FS-AC1200 Pro Edition packed with 12dBi antenna and 2 meters extension cable and Magnetic Base for better direction to get more powerful signal. The signal strength double than Basic Edition. It will provide best Wi-Fi signal than ever network adapter have.

4. Where can I get tech-support?
Any question about Feb Smart's product please contact us at support@febsmart.com or visit www.febsmart.com

5. Why the signal always drop sometimes?
1. The signals from router, so check if router works properly first , better restart the router wait few minutes and connect it again. Sometimes router was saved to much data ,need to restart and release the space.
2. Check if the antenna was put correctly.
3. Computer was put too far away from the router. Or signal from the router is unstable.

6. How can I trust your product in high performance?
FS-AC1200 was designed by Intel 7265 network card chipset. And the soft ware comes from Intel official site .High performance chipset make sure you connectivity safe and stable. Windows certified software runs more stable than any other network card.

15